



# Weekly W.R.A.P.S

**GENERAL SCHOOL RULES**

- Sensible is Safe
- Fair is Fun
- Manners Matter
- Property is Personal

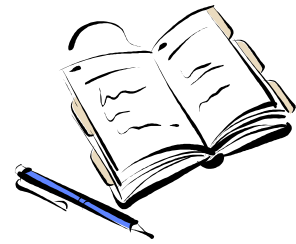
*Treat others as you would like to be treated yourself.*

**Term 1, Week 9**

**Monday, 23<sup>rd</sup> March, 2009**

**Calendar:**

Wed 25 <sup>th</sup> Mar	Round 1 - Interschool Chess at Woodlawn \$5 per student National Ride to School Day for student 10 yrs and older
Mon 6 <sup>th</sup> Apr	EASTER RAFFLE drawn at assembly
Mon 30 <sup>th</sup> Mar	Life Education finishes
Thurs 9 <sup>th</sup> Apr	School ANZAC Ceremony 9.00am Lantern Workshops – Stage 2 & 3 LAST DAY OF TERM 1
Tues 28 <sup>th</sup> Apr	SCHOOL DEVELOPMENT DAY
Sat 25 <sup>th</sup> Apr	LISMORE CITY ANZAC DAY MARCH – Students to marshal @ 8.30am in car park @ back of Richmond Hotel – pickup in Conway near Post Office @ conclusion of march.
Wed 29 <sup>th</sup> Apr	FIRST DAY OF TERM 2 FOR STUDENTS
12 <sup>th</sup> - 15 <sup>th</sup> May	NAPLAN ASSESSMENT PROGRAM



**SUPERVISION OF STUDENTS**

Could parents please note that when they pick up their children on the afternoon we expect students to abide by school rules whilst they are in and around the school. We have had a small number of incidents lately where young students have acted in a dangerous manner after being handed over to parents. Please be aware of the potential dangers around our school.

**NAPLAN 12<sup>th</sup>-15<sup>th</sup> MAY**

The National Assessment Program – Literacy And Numeracy (NAPLAN) will assess the literacy and numeracy learning of students in all Australian Schools at years 3, 5, 7 and 9. All of our Year 3 and 5 students will be assessed on the above dates. Please keep these dates free as these assessments are used for future planning at our school.

**PROPOSED INSTRUMENTAL MUSIC PROGRAM – WYRALLAH ROAD PUBLIC SCHOOL BAND**

At the present time we have had 4 responses to the Instrumental Music Program.

**If there is not greater interest this program will not operate.**

The P&C have approved an exciting new concept for music at Wyrallah Road Public School. This program will commence at the beginning of Term 2. We have engaged a band tutor who will provide ½ hour lessons for 3 or 4 students at a time. In the afternoon (after lunch) the tutor will put all band members together for practice as a band.

The cost per term is \$150 (\$100 for 10 lessons and \$50 for instrument hire and maintenance).

The school is purchasing 15 instruments as the initial stage 1 of this project. The instruments that will be available are:- flute 3, clarinet 3, trumpet 3, trombone 3 & alto sax 3.

We are looking for beginners who are keen who want to learn to play an instrument. Students who are already accomplished musicians will be very welcome to join the band component after lunch each Thursday.

The P&C will be handling the fees for this band program. If payment is made by cheque, do not make it out to the school – please make payment to 'WRPS P&C Association'.

**PLEASE DO NOT SEND ANY MONEY UNTIL WE GAUGE THE INTEREST IN THIS PROPOSAL.**

Students with their own instruments would not have to pay the instrument hire fees, only the tuition component.

Please indicate on the tear off slip provided later in this newsletter your interest in this program and return to the school office. This program is for Stage 2 & 3 (Yrs 3 – 6) students initially.

If there is little response this program will be withdrawn.

*Ralph Taylor*

## TAYLOR'S TEASER

The logic professor sent the following e-mail to his eight graduate students: "When the day after tomorrow is yesterday, we will meet the next day at 4pm." He sent the e-mail on Sunday.

**When will they meet?**

**LAST WEEK'S WINNER:** Sally (5/6B)    **LAST WEEK'S ANSWER:** CON



## SRC DISCO

Our first disco for the year will be held Tuesday evening, 7<sup>th</sup> April (Wk 11).

Things to note:

- K - Yr2 Disco is 5.30pm – 6.30pm
- Yr 3 – Yr 6 Disco is 6.30 – 8.00pm
- Cost is \$2 per student
- Attendance is by 'invitation only' (invitations will be given to children closer to the disco date)
- Food and drink will be available at a nominal price.

Our disco will have a "Future Job" theme (i.e. "what I want to be when I leave school"). NB. If unable to dress-up, still come! All the usual prizes and activities will be provided at our very popular disco. See you there!

**Craig Beck (for your friendly neighbourhood SRC)**

## CRICKET



The team played South Grafton last week in the second round of the knockout. Grafton opted to bat and were going along nicely after 12 overs without loss of a single wicket. Once we made a break-through the rest of their batsmen crumbled and they were all out for 58. It was a much improved bowling effort and some excellent fielding by the whole team.

We passed their score for the loss of 5 wickets and with plenty of overs to spare. We now have to wait while other teams play catch-up games before we will know who our next opposition will be. Well done fellas.

**Ted Williamson**

## NATIONAL RIDE TO SCHOOL DAY

This Wednesday is National Ride to School Day. Students that are 10 years and over are invited to participate.

**Bike Ed Committee**



## KINDER NEWS

- Northern Star Photos: The Kinder photos should appear in the Northern Star on Tuesday 31<sup>st</sup> March.
- Parent Training Session: All Kinder children received a note last week about the Literacy training sessions. These sessions will be held at 1.45pm and 6pm this Thursday 26<sup>th</sup> March. Remember that you only need to attend one session. For those parents who are keen to help out in the classroom it is important that you attend the training session.

## FUNDRAISING MEETING

Due to the fundraising meeting, school disco and P&C meeting all being on the last week of school we have decided to cancel the Fundraising meeting on the 6<sup>th</sup> April. We will be discussing any fundraising items at the P&C meeting including the fete committee report. All welcome to come to the P&C meeting instead.

**Amanda Franey**



## MUSIC PROPOSAL – WRPS BAND

STUDENT NAME:

CLASS:

INSTRUMENT PREFERRED:

I realise the cost will be \$150 per term.

PARENT/CARERS SIGNATURE:



**PLEASE DO NOT SEND MONEY UNTIL REQUESTED**

# HAROLD SHOP

## 2009 SHOP TIMES

### THIS WEEK IN THE ASSEMBLY AREA

Tuesday Lunchtime K/1/2

Wednesday Lunchtime 3/4/5/6

Thursday Lunchtime K-6



PRODUCT	PRICE
Bag Tag	\$1.50
Keyring	\$2.00
Hand Ball	\$1.50
Stationery Set	\$3.00
Eraser	.50c
Tattoo	.50c
Harold Watch	\$5.00
Harold Handy Bag	\$2.00

**CANTEEN NEWS:** Please remind your children ALL lunches must be ordered before school starts.

**Weekly Special:** Nachos \$2.50

TUESDAY – 24 <sup>th</sup> Mar	WEDNESDAY - 25 <sup>th</sup> Mar	THURSDAY – 26 <sup>th</sup> Mar	FRIDAY – 27 <sup>th</sup> Mar	MONDAY – 30 <sup>th</sup> Mar
Amanda Henessey Louise Sharpe	Greg Hjelstrom Meridith Young	Iris Millard Karen Scott	Julie Blanksby Louise Somerville Zenda Williams	Cherron Cameron Naomi Pitkin

**Sue Pagotto, Supervisor**

### P&C NEWS

- We trust you all received your **Easter raffle booklets** with last week's newsletter. If not, they are available from the office. Once your tickets are sold, pop them along with money, into an envelope and return to the office. These need to be returned by Friday 3<sup>rd</sup> April and the draw will take place at the morning assembly on Monday, 6<sup>th</sup> April.
- Jetstar** – if travelling with Jetstar between 19<sup>th</sup> Feb and 19<sup>th</sup> May, hang on to your boarding pass and bring along to school. Don't delay in bringing them to school though, as first in best dressed, and there are limited tickets available. We hope to gain another free ticket in their 'collect4schools' competition. These will make great prizes for a fundraiser during the year.
- As mentioned last week we have chosen not to take out the **Student Injury Insurance** once again. If this is a concern to you perhaps you might like to check with your Health Insurance provider if they provide personal accident insurance suitable for children. The following websites may be of help also:

<http://www.ing.com.au/ing-insurance/accident-cover-plus.asp?tcid=RB225-1827>

<http://www.cua.com.au/wps/wcm/connect/website/home/personalchange/insurance/personalaccident/>

- Got something to say??** Our P&C suggestions/comments box is now in place on the table in the front foyer. Feel free to drop a note regarding any P&C matter into the box – remember to include name and phone number if you would like someone to call you. The box is cleared each week.

**Michelle Sirach, Secretary**

**COMMUNITY NEWS:**

**GRAND OPENING - GOONELLABAH SPORTS AND AQUATIC CENTRE....APRIL 4, 2009 AT 10AM**

The Centre will play host to a Futsal, Basketball, Boxing and Netball display, along with Lismore's largest aerobic class. We will also have tours of the Centre including the Sports Stadium, Aquatic Centre, Multi-Purpose Youth Space, Generations Health and Fitness area and crèche facility. There will also be free entry to the centres pool along with the chance to ride on the centres "Blue Thunder Waterslide." For more information visit [www.gsac.net.au](http://www.gsac.net.au) or call 6625 5370.

**EAST LISMORE  
NETBALL CLUB**



Wyrallah Road Public School team will train at school on Tuesdays from 3.15pm to 4.15pm.

**Louise McKenzie Phone: 66222217**

**SCHOOL HOLIDAY ART CLASSES**

**Tuesday April 14 / Friday April 24**

Quality art classes held daily (10.00am-12.00 noon) in a fully equipped artmaking studio. Kids Art Lab is conveniently located in the Lismore CBD @ The Northern Rivers Conservatorium.

**Tuition:** \$16.00 per class / \$15.00 per class (prepayment for 4 or more classes).

**Bookings:** Belinda Madden **Ph:** 0429 384677

**Email:** [kidsartlab@hotmail.com](mailto:kidsartlab@hotmail.com)

**Website:** [www.kidsartlab.com](http://www.kidsartlab.com)

**ECO RANGERS**

Eco Rangers is an education based, fun and interactive vacation care day for children aged between 6 and 15 years of age. Activities include a photo with a snake, koala or crocodile, riding the train, behind the scenes tour and feeding some of Australia's unique native wildlife.

**Cost:** \$49 per child (Additional siblings at \$39 each)

**Times:** Start 9 am, Finish 3.30 pm

**Food:** Morning tea, lunch and afternoon tea provided

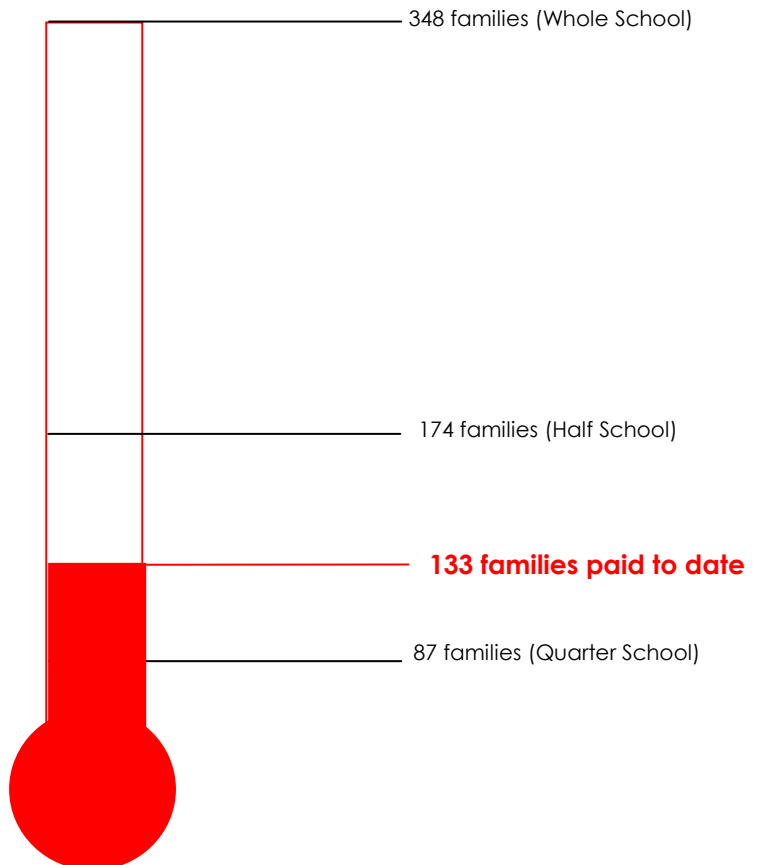
**Bookings** are essential 3 days in advance to avoid disappointment  
[Fill out a form on our website](#)

**Please see our website [www.cws.org.au](http://www.cws.org.au) for information and booking forms or call 5534 0846**



**VOLUNTARY CONTRIBUTIONS**

*Voluntary Contributions paid to date*





Wyrallah Road Public School  
 152 Nielson Street, Lismore NSW 2480  
 Phone (02) 6621 3363, (02) 6621 4870 Fax (02) 6622 2952

**GENERAL SCHOOL RULES**

- Sensible is Safe
- Fair is Fun
- Manners Matter
- Property is Personal

*Treat others as you would like to be treated yourself.*

**VOLUNTARY CONTRIBUTIONS – 2009**

The payment of these voluntary fees is fully endorsed by Wyrallah Road P & C Association. Our School does not gain additional funding from the NSW Government. Therefore, in order to offer the following listed activities and resources: **reading resources, library books, classroom consumables, texts, sporting equipment, student award scheme prizes, drug & environmental education, poetry, art and science**, it is essential that all families endeavour to pay the school contributions.

We are looking to purchase 'Smart Boards' this year, which will add tremendously to our teaching/learning programs and move our classrooms into the 21<sup>st</sup> Century.

If you are unable to pay in a single payment, you are welcome to pay the contribution by instalment.

**VOLUNTARY CONTRIBUTION SCHEDULE**

Each Student K – 6 (each) ..... \$55.00

**OR**

Family Rate (3 children +) ..... \$130.00

**TOTAL PAID \$**

Cash     Cheque

Student Name(s)	Year	Home Class
.....	.....	.....
.....	.....	.....
.....	.....	.....
.....	.....	.....

**RALPH TAYLOR**  
**PRINCIPAL**